



CBT-GT-A

接触式平面度测量仪 Contact Type Flatness Inspection Machine

性能参数 Performance Parameter

额定电压Rated Voltage: AC220V 50Hz
气压Barometric Pressure: ≥ 0.4 MPa
机台尺寸Size: L:850mm W: 770mm H: 1720mm



测量范围Measuring Range: 100*100mm
量程 Range: 12mm
重复精度Repeatability accuracy: 2 μ m
独立知识产权: 软著号: 4339945
Independent Intellectual Property Rights:
Soft Tag: 5102052

应用案例 Applications

- A. 汽车发动机缸盖平面度测量
- B. 机加工件平面度检测
- C. 注塑壳体结合面平面度检测
- D. 手机/平板内膜叠层厚度检测
- A. Flatness measurement of automobile engine cylinder head
- B. Flatness detection of machined parts
- C. Flatness detection of injection shell joint surface
- D. Measurement of intimal lamination thickness of mobile phone / flat panel

设备特点 Equipment Features

适应性强:能适应恶劣环境对加工件表面残留切削液/油要求较低
Strong Adaptability: Suitable for use in the harsh environment of work piece machining with regards to residual cutting fluid/oil.

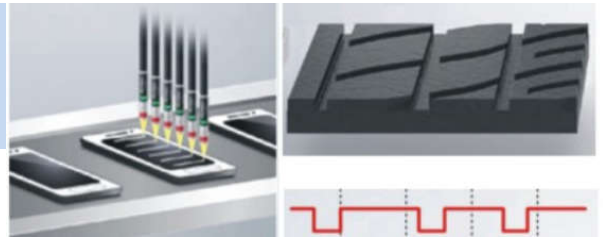
灵活性好:安装位置小,能同时测多个点位;适合车间对产品全测使用
High Flexibility: Small area installation, multiple testing points at the same time; suitable for full inspection of all products.

使用寿命长:测头使用次数在200KK次以上
Long Service Life: The probe can be used more than 200KK times.



CBT-CL-A

非接触式点激光平面度测量仪 Non Contact Spot Laser Flatness Inspection Machine



性能参数

Performance Parameter

额定电压Rated Voltage: AC220V 50Hz
机台尺寸 Size: L:850mm W: 770mm H: 1720mm
扫描速度Scanning Speed: 50mm/S

测量范围Measuring Range: 300*200mm
量程Range: $\pm 1.3 \pm 3.7 \pm 10$
重复精度Repeatability Accuracy: $1-5 \mu m$
独立知识产权: 软著号: 4339945
Independent Intellectual Property Rights:
Soft Tag: 4339945

应用案例

Applications

- A. 手机玻璃平面度检测
- B. 平板电脑屏幕玻璃平面度检测
- A. Flatness inspection of mobile phone glass
- B. Flatness inspection of screen glass of tablet computer

设备特点

Equipment Features

适应性强: 对应曲面, 凹坑, 高低差能力
Strong Adaptability: Well suited for different surface conditions including cavity providing height difference measurements.
灵活性好: 直径仅8mm, 能在狭小空间非接触式测量, 节拍时间短适合车间生产使用
High Flexibility: Laser spot diameter is 8mm, can measure height difference in a small space, fast cycle time well suited for online production use.
应用范围广: 能对透明, 镜面体的球面, 倾斜实现高精度测量
Wide Range of Applications: Can measure transparent or mirrored surface of the curved or tilted products with a high degree of accuracy.
通用算法: 与三丰3坐标一致
General Algorithm: Similar to CMM



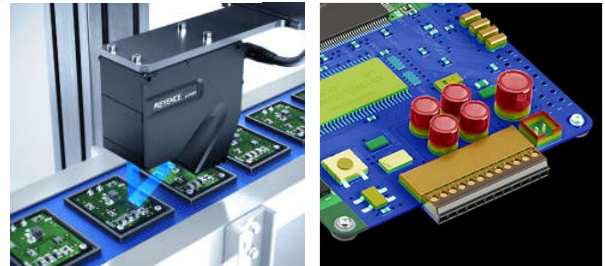
CBT-LJX-A

线激光扫描测量仪 Non Contact 2D Laser Inspection Machine

性能参数

Performance Parameter

额定电压Rated Voltage: AC220V 50Hz
机台尺寸 Size: L:850mm W: 770mm H: 1720mm
扫描速度Scanning Speed: 50mm/S



测量范围Measuring Range: 200*280mm
Z 范围Z Range: 25mm
Z轴重复精度Z Repeatability Accuracy: 10 μm
独立知识产权: 软著号: 4339945
Independent Intellectual Property Rights:
Soft Tag: 4339951

应用案例

Applications

- | | | |
|---------------|-------------------------|---------------|
| A. 金属制件端面形状测量 | B. 手机装配精度确认 (玻璃与外壳装配间隙) | |
| C. 贴片平整度检测 | D. 印刷电路板芯片高度测量 | |
| E. 相机模块装配精度测量 | F. 点胶高度宽度物理检测 | G. 散热器平面度高差检测 |
- A. Measurement of edges precision engineered metal parts
B. Confirmation of assembly accuracy of mobile phone (assembly gap between glass and shell)
C. Flatness detection of SMT
D. Height measurement of printed circuit board chip
E. Assembly accuracy measurement of camera module
F. Glue/Wax/Welding height and width inspection and measurements
G. Radiator flatness height difference detection

设备特点

Equipment Features

利用3200 point/profile 超高精度绘图 可以极其精细地呈现出目标物的形状
Using 3200 point / profile ultra high precision, provides a high resolution image of target.
不受目标物颜色及光泽影响
It is not affected by the color and luster of the target.